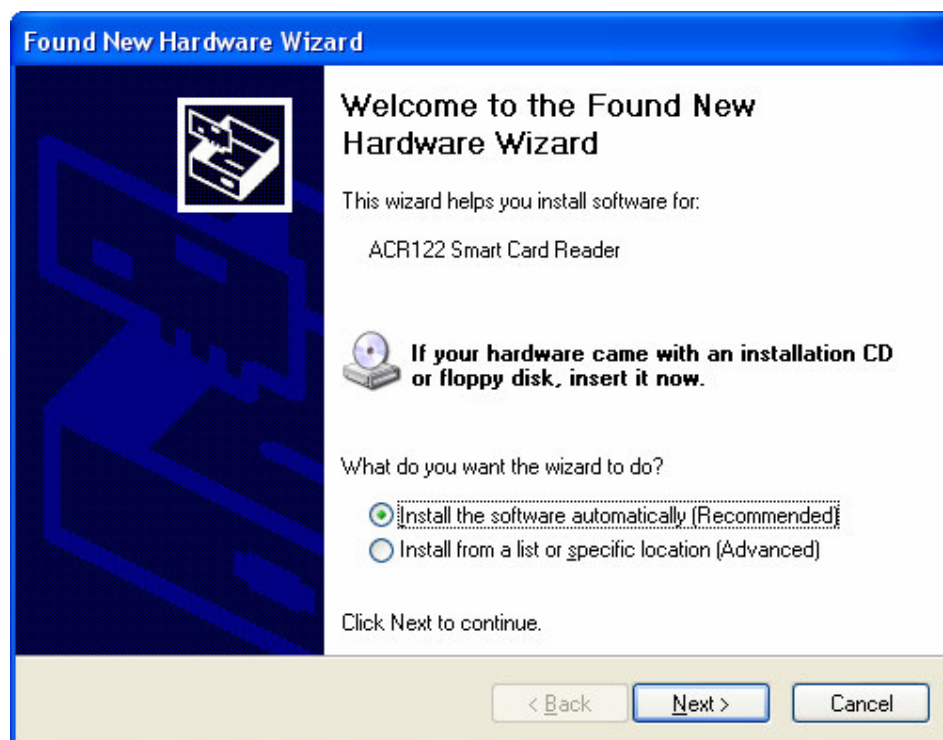


Ez-Online Installation Guide

1. Thank you for purchasing the new ez-link card reader. With this new reader, you can now use your ez-link card to transact via EZ-Online to do top-ups, shop or make payments and even check your ez-link card's balance and transaction history over the internet in a safe and secure manner. This reader is a improved version of the previous reader because it reads both the previous ez-link card and the new ez-link card which is CEPAS compliant¹ from the comforts of your home or virtually any PC or lap-top with internet connectivity²
2. To install the EZ-Online card reader :
 - a. Plug-in the ez-link reader
 - b. Press "Cancel" button if you have a message popup below:

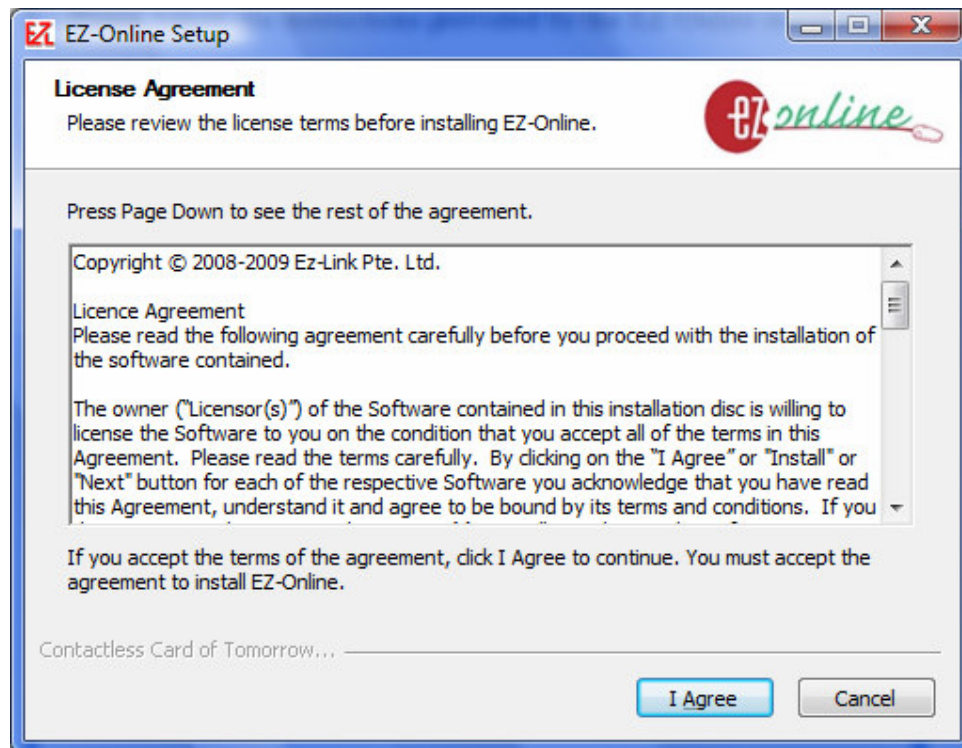


- c. Load the installation disc and it will begin to install automatically
 - d. Or, you have to double click on the [EZ-Online.exe](#) to start the installation

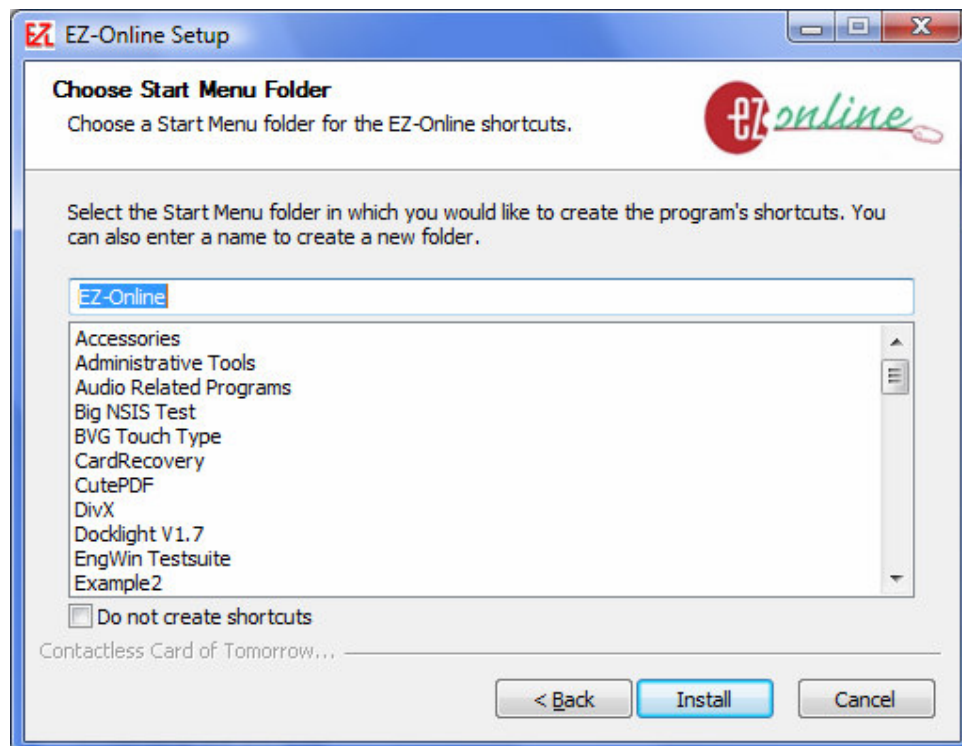
¹ CEPAS is the new national standard for Contactless ePurse Applications.

² Please note that installation at offices or organizations with corporate firewalls set-up requires specific ports to be open.

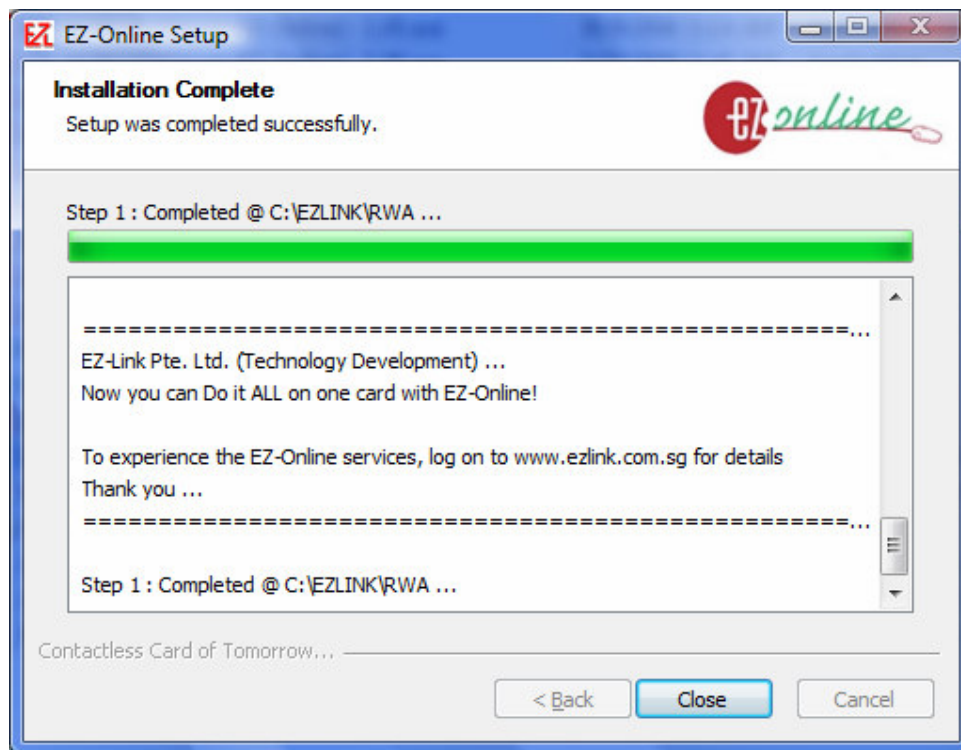
3. Please follow the instructions provided by the EZ-Online installation Wizard
4. If you accept the license agreement, choose "I Agree" and click the "Next" button.



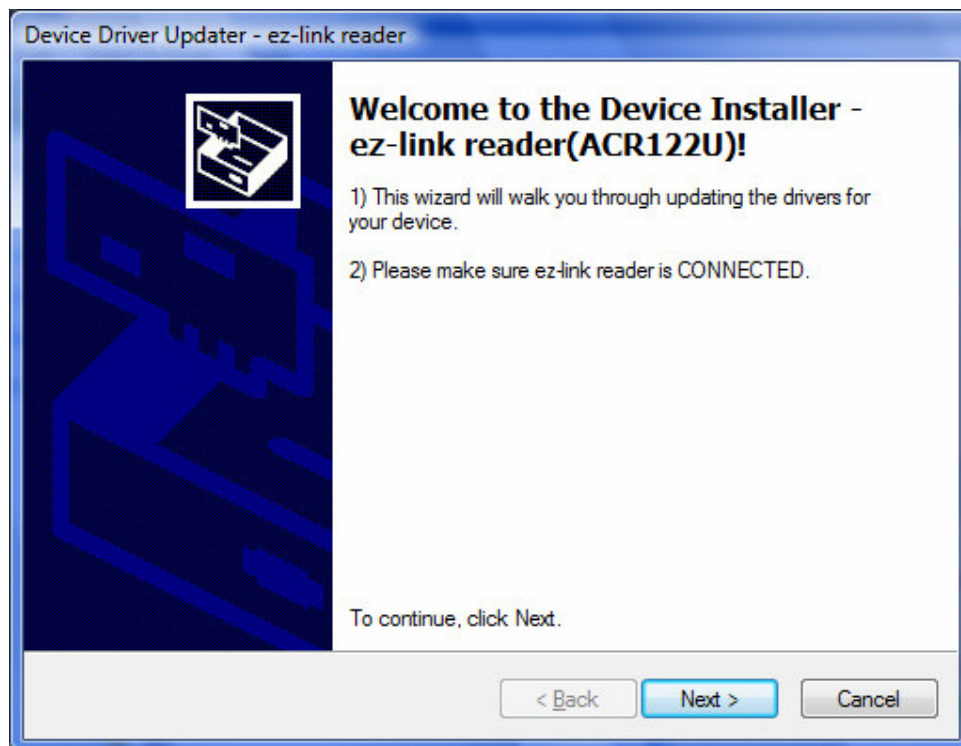
5. Use default Menu Folder or type in your own



6. Ez-Online installation completed:



7. Click “Close” button to detect and install the Ezlink Reader’s Driver
**Please ensure that your reader is connected now.*

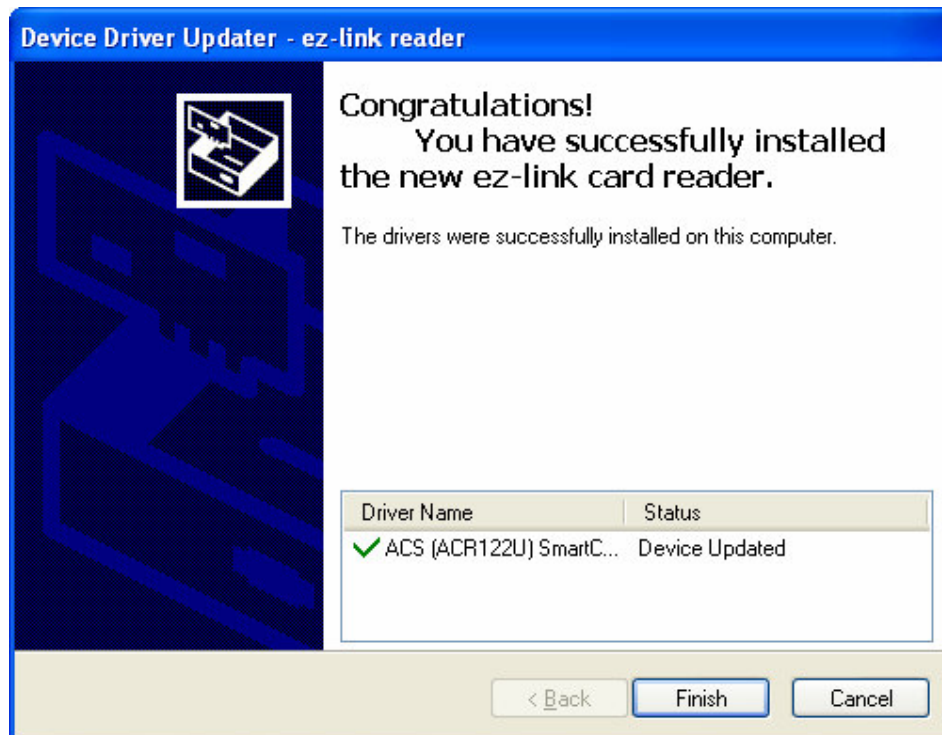


8. Click “Next”

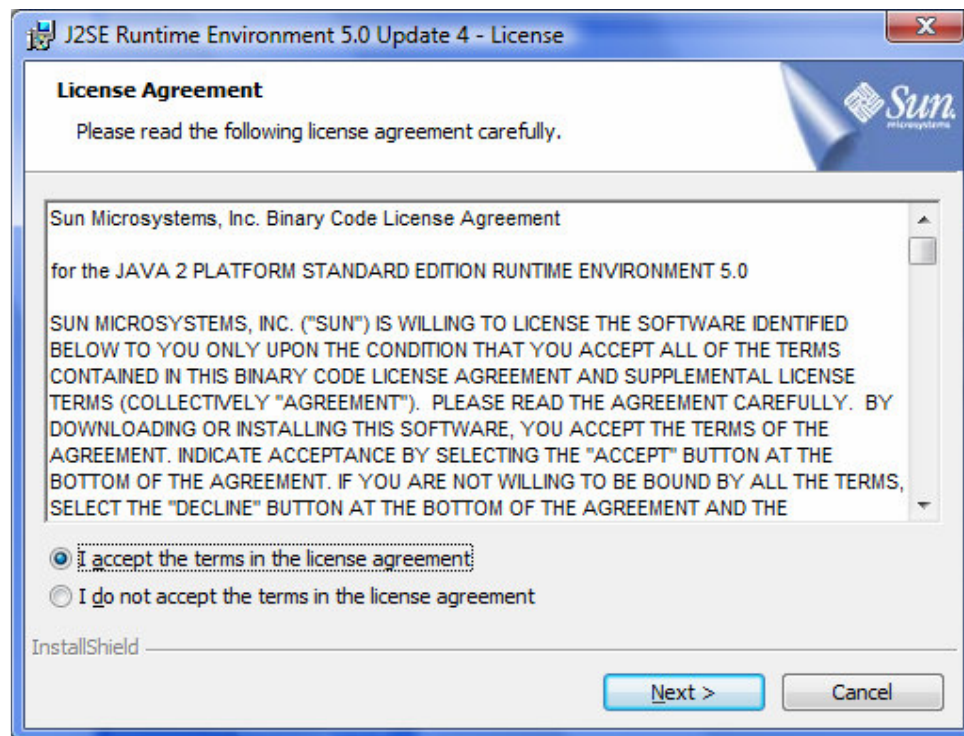


9. Click “Continue Anyway”

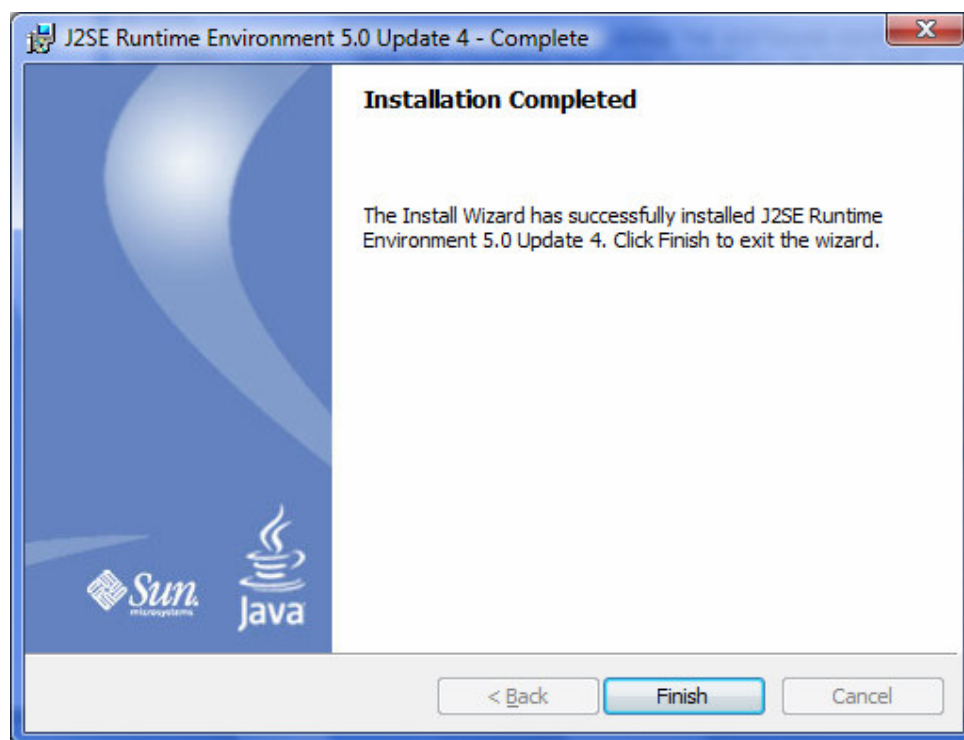
10. Installation of Ezlink Reader’s Driver done



11. Click “Finish” button to install the **JS2E Runtime Enviroment 5.0 Update 4**



Click “Next” to continue



12. Installation Complete.

Go to www.ezlink.com.sg to experience the EZ-Online services.